

RAD CALIBRATION SYSTEMS 1500

Part Number: **23442**



LIGHTER **FASTER** STRONGER

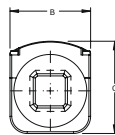
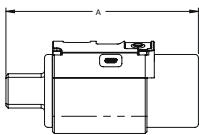
The RAD Calibration Systems have earned their place in calibration laboratories worldwide because of their high accuracy and repeatability.

SPECIFICATIONS

Torque Ranges: 75 ft. lbs. - 1500 ft. lbs.
 Weight: 4.0 lbs.
 Square Drive: 1.0"
 Repeatability: +/-1
 Accuracy: +/-1%



DIMENSIONS



DIMENSION A	DIMENSION B	DIMENSION C
5.60"	2.35"	2.70"



Bluetooth connectivity to your smart phone or tablet



Non Impacting



Safe & Reliable



Class 1 Division 2 Group A, B, C, D T4



Accredited ISO/IEC 17025



info@specanalytics.com | www.specanalytics.com | 225-319-7349