

RAD CALIBRATION SYSTEMS 7000

Part Number: **23444**



LIGHTER **FASTER** STRONGER

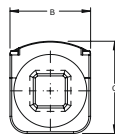
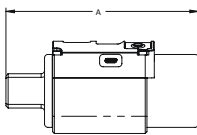
The RAD Calibration Systems have earned their place in calibration laboratories worldwide because of their high accuracy and repeatability.

SPECIFICATIONS

Torque Ranges: 350 ft. lbs. - 7000 ft. lbs.
 Weight: 11.0 lbs.
 Square Drive: 1.5"
 Repeatability: +/-1
 Accuracy: +/-1%



DIMENSIONS



DIMENSION A	DIMENSION B	DIMENSION C
6.75"	2.50"	4.00"



Bluetooth connectivity to your smart phone or tablet



Non Impacting



Safe & Reliable



Class 1 Division
2 Group A, B,
C, D T4



Accredited
ISO/IEC 17025



info@specanalytics.com | www.specanalytics.com | 225-319-7349